

Pressure Gauge for Clean Series (10-series)

Series G49



- Be sure to read the precautions on page 3 for selection and mounting.

Standard Specifications

Installation of a filter on the breathing hole (filtration 3 μm) enables an unit to curb particle generation from the pressure gauge inside.

Model		G49
Type		Back side thread
Port size ⁽¹⁾		R 1/8, R 1/4
Fluid ⁽³⁾		Air
Indication precision ⁽⁴⁾		±3 % F.S. (Full span)
Material	Case (Surface treatment)	Zinc die-casted (Chromate plated)
	Clear cover	Glass
	Stud (Surface treatment)	Brass (Nickel plated for external parts only)
	Bourdon tube	Brass ⁽²⁾
Weight (kg)		0.095

Note 1) When mounting a pressure gauge, use caution not to tighten excessively. Excessive tightening will cause product failure. Use a pipe tape for sealing.

Note 2) Bourdon tube and internal movable parts (gear, etc.) are made of brass, and are not nickel plated.

Note 3) Avoid freezing as this may cause a malfunction.

Note 4) The guaranteed temperature range is 23 °C ±5 °C.

Model (Standard)

Model	Pressure range ⁽¹⁾		Indication unit	Connection thread	Note
	MPa				
G49-2-02	0 to 0.2		MPa	R 1/4	—
G49-7-02	0 to 0.7				
G49-10-02	0 to 1.0				

Note 1) Do not apply pressure more than the maximum display pressure. This will cause a malfunction.

Model (Made to Order)

Other versions of this unit can be made on a Made-to-Order basis.

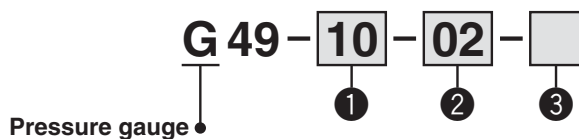
Please consult with SMC for details, as delivery times may be extended.

Model	Pressure range ⁽¹⁾		Indication unit	Connection thread	Note
	MPa	psi			
G49-P10-02-X30 ⁽²⁾	0 to 1.0	0 to 150	MPa, psi	R 1/4	—

Note 1) Do not apply pressure more than the maximum display pressure. This will cause a malfunction.

Note 2) Under the New Measurement Law, products for overseas use only (SI unit type for use in Japan)

How to Order



		Symbol	Description	G49
		+		
①	Max. display pressure	2	0.2 MPa	●
		4	0.4 MPa	●
		7	0.7 MPa	●
		10	1.0 MPa	●
		P2 ⁽¹⁾	0.2 MPa, 30 psi	○ ⁽²⁾
		P10 ⁽¹⁾	1.0 MPa, 150 psi	○ ⁽²⁾
		+		
②	Connection thread	01	R 1/8	●
		02	R 1/4	●
		+		
③	Special specification	—	—	●
		X3 ⁽³⁾	Wetted parts stainless steel	●
		X30	Both MPa and psi	○ ⁽²⁾

Note 1) This symbol must be used with Special specification "X30."

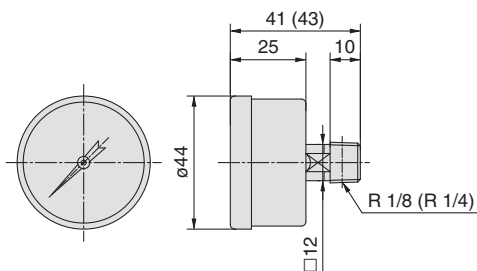
Note 2) Under the New Measurement Law, products for overseas use only (SI unit type for use in Japan)

Note 3) Movable parts (gear, etc.) inside pressure gauge are made of brass. In addition, this specification is only available for connection thread "02".

Note 4) Cover ring assembly is not available.

Dimensions * The dimensions in (): Connection thread R 1/4

G49-□-01 to 02





Pressure Gauge Guide Specific Product Precautions

Be sure to read this before handling.

Selection

Caution

1. Do not apply high load voltage (current) or surge current as this can cause the switch to malfunction.
2. Make sure that no direct impact or vibrations are applied to the body.
3. If operating under pressure pulsations or in high frequency operations, please contact SMC.

Mounting

Caution

1. During transport and installation, do not apply shock to the product, such as by dropping doing so will affect its precision.
2. Regarding the installation posture, place it perpendicular to the ground, with the zero point on the reading of a pressure gauge facing down.
3. Do not install it in an area that is exposed to high temperature or humidity, because doing so will lead to improper operation.
4. To screw in the pressure gauge, make sure to turn the gauge by placing a wrench over the square wrench flats.

If the pressure gauge is screwed in by holding it on some other area, air leakage or damage may result.